


## UHPLC CERTIFICATE OF ANALYSIS

### SAMPLE INFORMATION

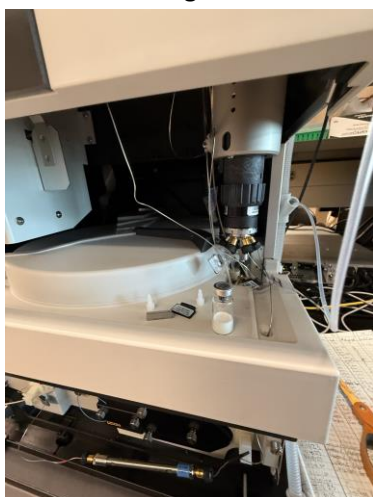
Sample received:

<b>Product Name</b>	IGF-1LR3 1mg Batch No. 44316
<b>Sequence</b>	Gly-Pro-Glu-Glu-Thr-Leu-Cys-Gly-Ala-Gln-Leu-Val-Cys-Gly-Arg-Gly-Phe-Tyr-Phe-Ser-ProLys-Ala-Tyr-Leu-Leu-Val-Asp-Asn-Leu-Tyr-Ser-Arg-Leu-Tyr-Glu-Ser-Leu-Leu-Tyr-Arg-LeuLeu-Gln-Ser-Leu-Leu-Ser-Leu-Arg-Gly-Ser-Leu-Val-Leu-Gly-Arg-Gly-Ser-Leu-Gln-Tyr-LeuLeu-Val-Arg-Gly-Glu-Gln-Gln-Gly-Ser-Leu-Ser-Ser-Leu-Ser-Ser-OH
<b>Dissolution Condition</b>	100% UHPLC water with 0.1% Trifluoroacetic Acid (TFA). Dissolved sample picture included here. 
<b>Molecular Weight</b>	~9111 g/mol

**STORAGE CONDITION:** 0 °C

### SAMPLE NOTES

One 3 ml clear glass vial with silver cap and silver aluminum crimp. Lyophilized powder present.



## PUMP SETTINGS

<b>Pump A</b>	100% H2O with .1% Trifluoroacetic Acid
<b>Pump D</b>	100% Acetonitrile.
<b>Column Usage</b>	Agilent Zorbax 300SB-C18, 2.1 x 100 mm, 1.7 $\mu$ m, 300 Å
<b>Gradient</b>	- 5% D hold (0–1 min) - 5–40% D over 18 min (1.9% D/min) - Hold 40% D (3 min) - Re-equilibrate to 5% D over 3 min - Total run time: ~25 min.
<b>Pump Settings</b>	0.6 mL/min
<b>Injection Volume:</b>	10 $\mu$ L
<b>Temperature</b>	30 °C

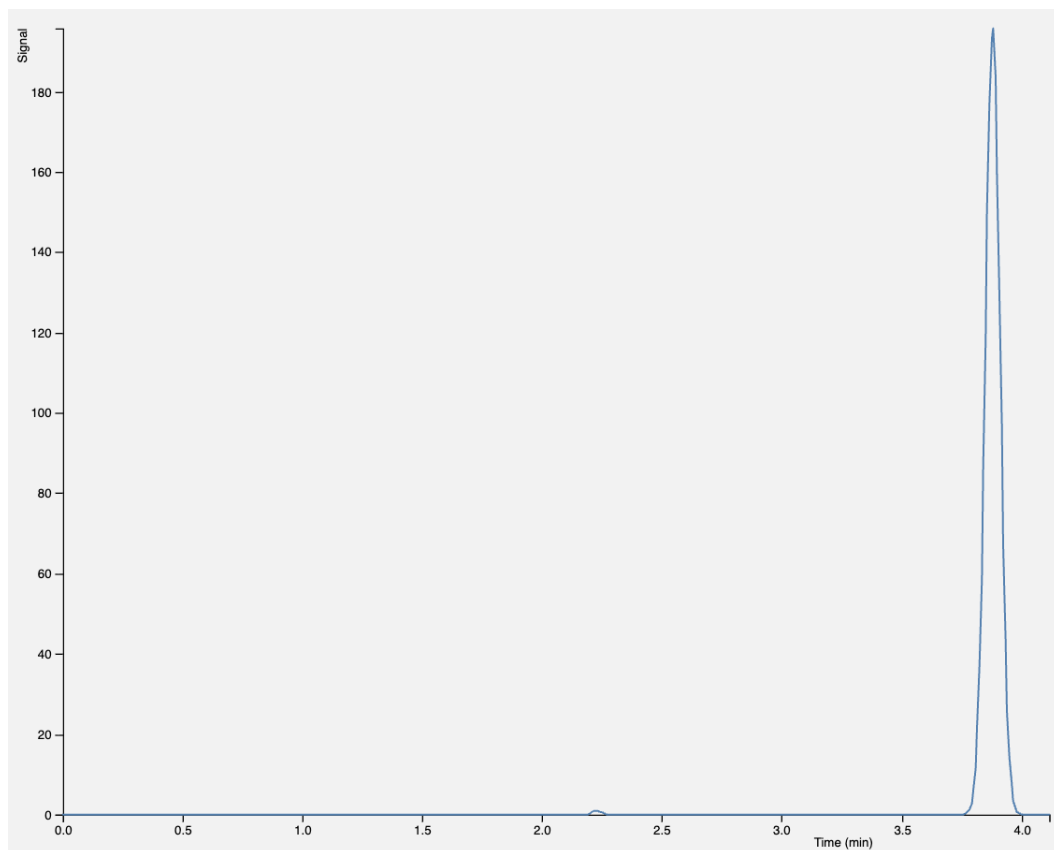
## PURITY RESULT

Purity is **99.71%**

**Product weight extrapolation: 1.8mg**

Total impurity 0.29% (trace inert solvents and minor unidentified peaks; no significant related substances or degradation products detected above 0.1%).

**Chromatogram Export: please note that x axis represents elution window.**



## CONCLUSION

This sample was analyzed on a Thermo Ultimate U3000 HPLC stack using reverse-phase high-performance liquid chromatography and determined to contain **99.71% IGF-1LR3** with the remainder being impurities of minor significance.

## CERTIFICATION

**Certified by:** Jonathan Barber

**Title:** Analytical Chemist

**Date:** 13 December 2025



Trulab Peptides [www.trulabpeptides.com](http://www.trulabpeptides.com) | **Phone:** 872-239-6582  
**Address:** 15017 North Dale Mabry Highway #1121 Tampa, FL 33618 United States