


## UHPLC CERTIFICATE OF ANALYSIS

### SAMPLE INFORMATION

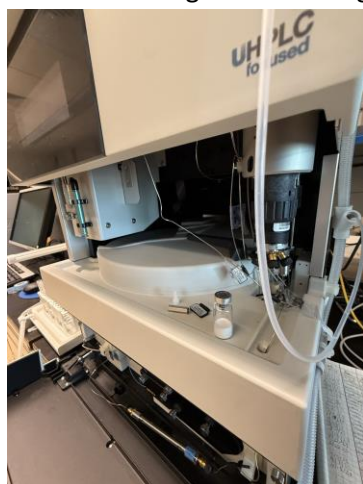
Sample received:

<b>Product Name</b>	Glow Blend Batch 70mg No. 17229
<b>Sequence</b>	Glow Blend (BPC-157 / TB-500 / GHK-Cu): BPC-157 (H-Gly-Glu-Pro-Pro-Pro-Gly-Lys-Pro-Ala-Asp-Asp-Ala-Gly-Leu-Val-OH, MW $\approx$ 1419.5 Da); TB-500 (Ac-LKKTETQ, MW $\approx$ 889.0 Da free base); GHK-Cu (H-Gly-His-Lys-OH $\cdot$ Cu <sup>2+</sup> , MW $\approx$ 403.9 Da).
<b>Dissolution Condition</b>	100% UHPLC water with 0.1% Trifluoroacetic Acid (TFA). Dissolved sample picture included here. 
<b>Molecular Weight</b>	$\sim$ 934 g/mol

**STORAGE CONDITION:** 0 °C

### SAMPLE NOTES

One 3 ml clear glass vial with green cap and silver aluminum crimp. Lyophilized powder present.



## PUMP SETTINGS

Pump A	100% H2O with .1% Trifluoroacetic Acid
Pump D	100% Acetonitrile.
Column Usage	Agilent Zorbax 300SB-C18, 2.1 x 100 mm, 1.7 µm, 300 Å
Gradient	<ul style="list-style-type: none"><li>- 5% D hold (0–0.5 min)</li><li>- 5 → 30% D over 6.0 min (≈4.17% D/min)</li><li>- 30 → 60 % D over 6.0 min (≈ 5.0 % D/min)</li><li>- Hold 60% D (1 min)</li><li>- Re-equilibrate to 5% D over 1.5 min</li><li>- Total run time ≈ 15 min</li></ul>
Pump Settings	0.3 mL/min
Injection Volume:	10 µL
Temperature	35 °C

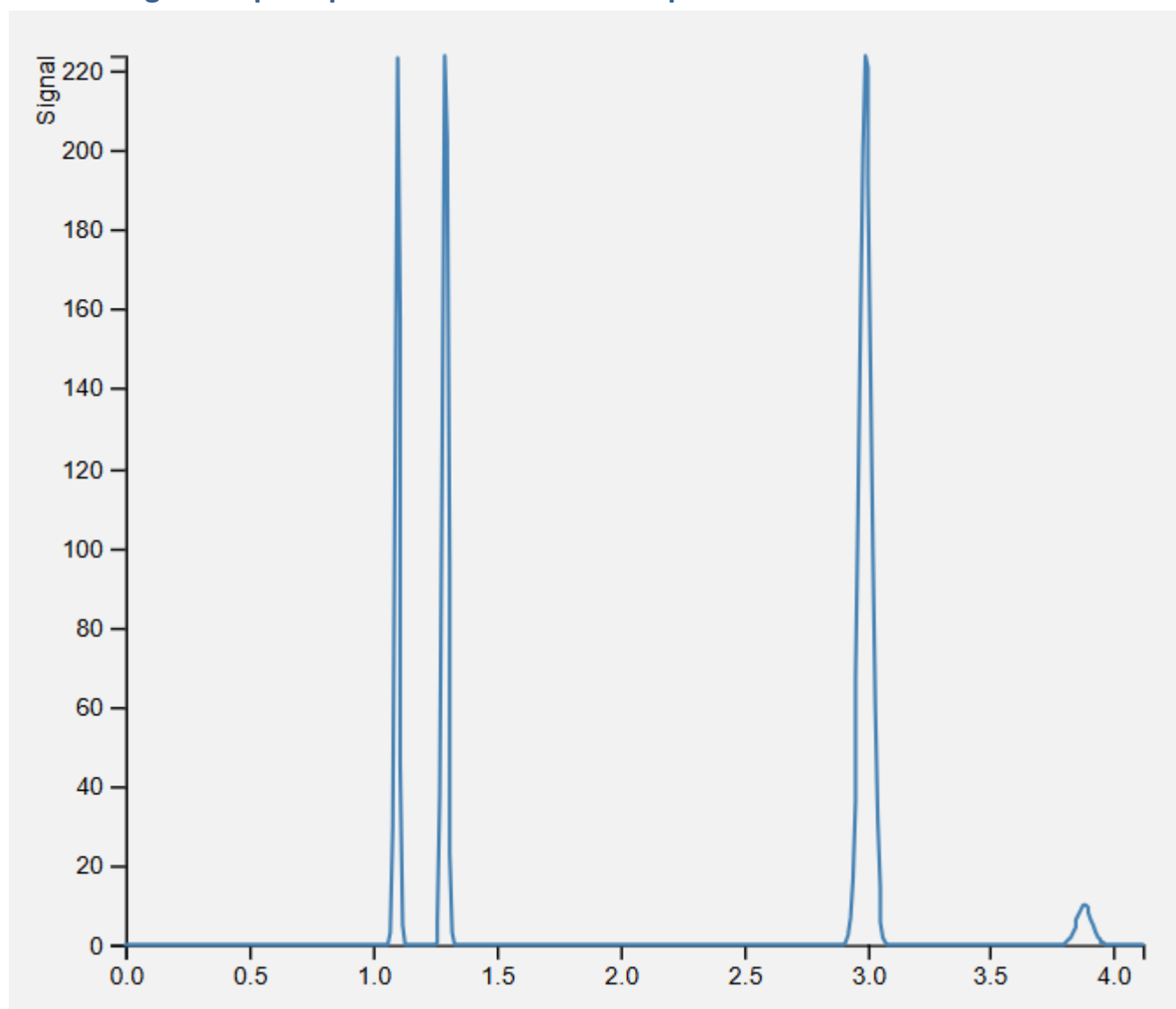
## PURITY RESULT

Purity is **99.10%**

Total impurity 0.90% (trace inert solvents and minor unidentified peaks; no significant related substances or degradation products detected above 1%).

Please note that weight was not tested in this run.

**Chromatogram Export: please note that x axis represents elution window.**



## CONCLUSION

This sample was analyzed on a Thermo Ultimate U3000 HPLC stack using reverse-phase high-performance liquid chromatography and determined to contain **99.56% Glow Blend**, with the remainder being impurities of minor significance.

## CERTIFICATION

**Certified by:** Jonathan Barber

**Title:** Analytical Chemist

**Date:** 30 October 2025



Trulab Peptides [www.trulabpeptides.com](http://www.trulabpeptides.com) | **Phone:** 872-239-6582

**Address:** 15017 North Dale Mabry Highway #1121 Tampa, FL 33618 United States