


UHPLC CERTIFICATE OF ANALYSIS

SAMPLE INFORMATION

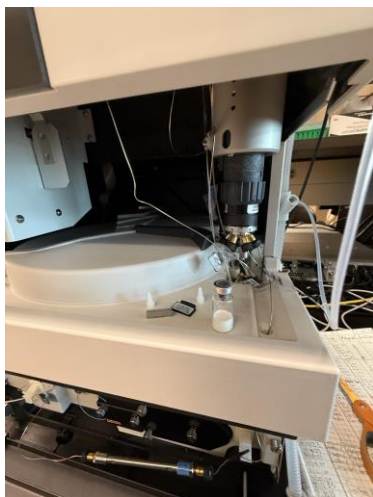
Sample received:

Product Name	IGF-1LR3 1mg Batch No. 44315
Sequence	Gly-Pro-Glu-Glu-Thr-Leu-Cys-Gly-Ala-Gln-Leu-Val-Cys-Gly-Arg-Gly-Phe-Tyr-Phe-Ser-ProLys-Ala-Tyr-Leu-Leu-Val-Asp-Asn-Leu-Tyr-Ser-Arg-Leu-Tyr-Glu-Ser-Leu-Leu-Tyr-Arg-LeuLeu-Gln-Ser-Leu-Leu-Ser-Leu-Arg-Gly-Ser-Leu-Val-Leu-Gly-Arg-Gly-Ser-Leu-Gln-Tyr-LeuLeu-Val-Arg-Gly-Glu-Gln-Gln-Gly-Ser-Leu-Ser-Ser-Leu-Ser-Ser-OH
Dissolution Condition	100% UHPLC water with 0.1% Trifluoroacetic Acid (TFA). Dissolved sample picture included here. 
Molecular Weight	~9111 g/mol

STORAGE CONDITION: 0 °C

SAMPLE NOTES

One 3 ml clear glass vial with silver cap and silver aluminum crimp. Lyophilized powder present.



PUMP SETTINGS

Pump A	100% H2O with .1% Trifluoroacetic Acid
Pump D	100% Acetonitrile.
Column Usage	Agilent Zorbax 300SB-C18, 2.1 x 100 mm, 1.7 µm, 300 Å
Gradient	<ul style="list-style-type: none">- 5% D hold (0–1 min)- 5–40% D over 18 min (1.9% D/min)- Hold 40% D (3 min)- Re-equilibrate to 5% D over 3 min- Total run time: ~25 min.
Pump Settings	0.6 mL/min
Injection Volume:	10 µL
Temperature	30 °C

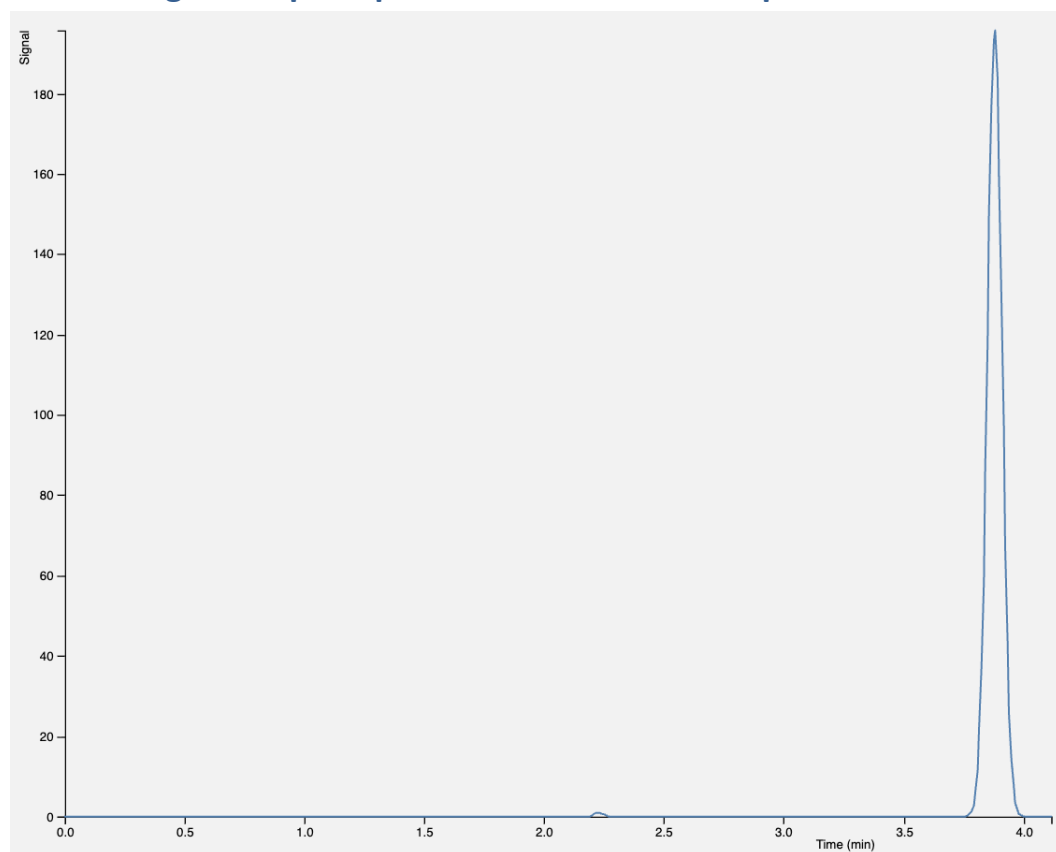
PURITY RESULT

Purity is **99.71%**

Product weight extrapolation: 1.08mg

Total impurity 0.29% (trace inert solvents and minor unidentified peaks; no significant related substances or degradation products detected above 0.1%).

Chromatogram Export: please note that x axis represents elution window.



CONCLUSION

This sample was analyzed on a Thermo Ultimate U3000 HPLC stack using reverse-phase high-performance liquid chromatography and determined to contain **99.71% IGF-1LR3** with the remainder being impurities of minor significance.

CERTIFICATION

Certified by: Jonathan Barber

Title: Analytical Chemist

Date: 13 September 2025



Trulab Peptides www.trulabpeptides.com | **Phone:** 872-239-6582

Address: 15017 North Dale Mabry Highway #1121 Tampa, FL 33618 United States