


## UHPLC CERTIFICATE OF ANALYSIS

### SAMPLE INFORMATION

Sample received:

<b>Product Name</b>	HCG 5000 IU Batch No. 76231
<b>Sequence</b>	glycoprotein hormone, polypeptide chains $\alpha$ & $\beta$ subunits
<b>Dissolution Condition</b>	100% UHPLC water with 0.1% Trifluoroacetic Acid (TFA). Dissolved sample picture included here. 
<b>Molecular Weight</b>	~36,700 g/mol

**STORAGE CONDITION:** 0 °C

### SAMPLE NOTES

One 3 ml clear glass vial with red cap and silver aluminum crimp. Lyophilized powder present.



## PUMP SETTINGS

Pump A	100% H2O with .1% Trifluoroacetic Acid
Pump D	100% Acetonitrile.
Column Usage	Agilent Zorbax 300SB-C18, 2.1 x 100 mm, 1.7 µm, 300 Å
Gradient	<ul style="list-style-type: none"><li>- 20% D hold (0–1.0 min)</li><li>- 20 → 60% D over 20 min (≈2.0% D/min)</li><li>- Hold 60% D (3 min)</li><li>- Re-equilibrate to 20% D over 6 min</li><li>- Total run time: ~30 min.</li></ul>
Pump Settings	0.3 mL/min
Injection Volume:	10 µL
Temperature	60 °C

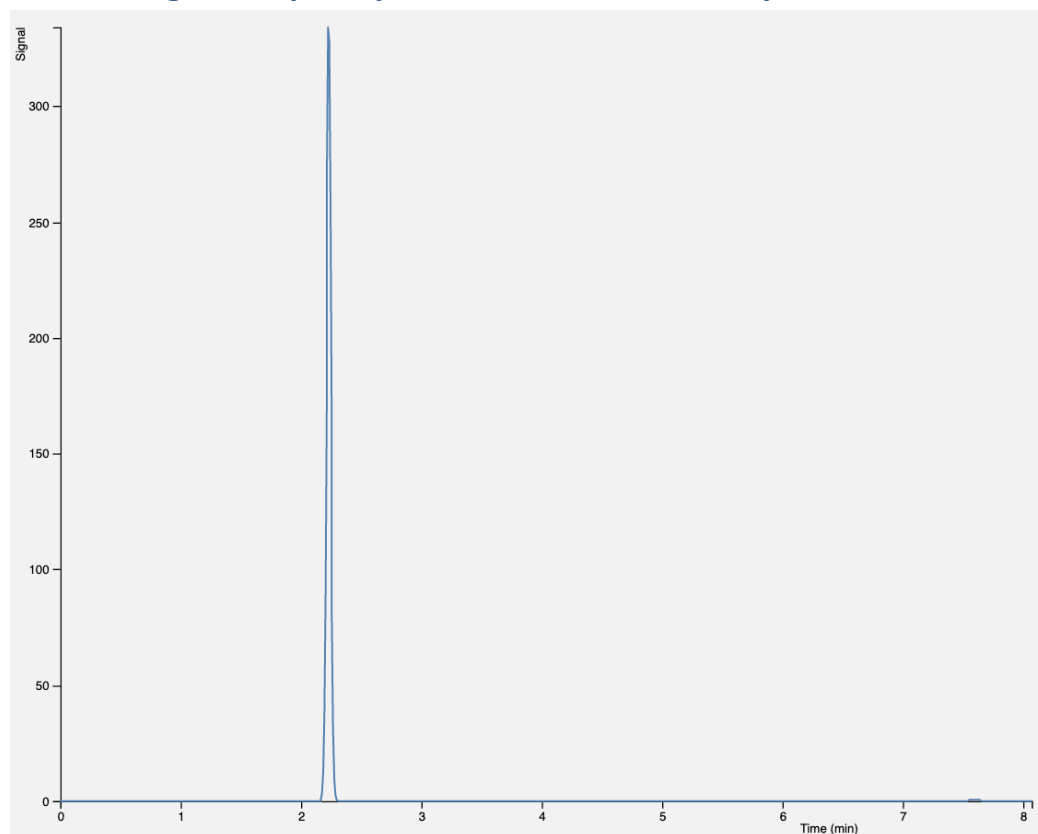
## PURITY RESULT

Purity is **99.62%**

**Product weight extrapolation: 5000 IU**

Total impurity 0.38% (trace inert solvents and minor unidentified peaks; no significant related substances or degradation products detected above 0.1%).

**Chromatogram Export: please note that x axis represents elution window.**



## CONCLUSION

This sample was analyzed on a Thermo Ultimate U3000 HPLC stack using reverse-phase high-performance liquid chromatography and determined to contain **99.62% HCG**, with the remainder being impurities of minor significance.

## CERTIFICATION

**Certified by:** Jonathan Barber

**Title:** Analytical Chemist

**Date:** 15 September 2025



Trulab Peptides [www.trulabpeptides.com](http://www.trulabpeptides.com) | **Phone:** 872-239-6582

**Address:** 15017 North Dale Mabry Highway #1121 Tampa, FL 33618 United States