


## UHPLC CERTIFICATE OF ANALYSIS

### SAMPLE INFORMATION

Sample received:

<b>Product Name</b>	BPC-157/TB-500 Blend 10mg/10mg Batch No. 27282
<b>Sequence</b>	BPC-157: Gly-Glu-Pro-Pro-Pro-Gly-Lys-Pro-Ala-Asp-Asp-Ala-Gly-Leu-Val TB-500: Ac-Ser-Asp-Lys-Pro-Ala-Glu-Ile-Glu-Lys-Ala-Val-Ser-Thr-Gln-Lys-Phe-Glu-Lys-AlaGlu-Glu-Lys-Val-Val-Thr-Glu-Lys-Ser-Gln-Glu-Glu-Ser-Glu-Ala-Glu-Glu-Gln-Leu-Glu-Gln
<b>Dissolution Condition</b>	100% UHPLC water with 0.1% Trifluoroacetic Acid (TFA). Dissolved sample picture included here. 
<b>Molecular Weight</b>	BPC-157: ~1419 g/mol TB-500: ~4963 g/mol

**STORAGE CONDITION:** 0 °C

### SAMPLE NOTES

One 3 ml clear glass vial with silver cap and silver aluminum crimp. Lyophilized powder present.



## PUMP SETTINGS

Pump A	100% H2O with .1% Trifluoroacetic Acid
Pump D	100% Acetonitrile.
Column Usage	Agilent Zorbax 300SB-C18, 2.1 x 100 mm, 1.7 µm, 300 Å
Gradient	<ul style="list-style-type: none"><li>- 5% D hold (0–0.5 min)</li><li>- 5 → 30% D over 6 min</li><li>- 30 → 60% D over 10 min</li><li>- Hold 60% D (3 min)</li><li>- Re-equilibrate to 5% D over 3.5 min</li><li>- Total run time: ~24 min.</li></ul>
Pump Settings	0.6 mL/min
Injection Volume:	10 µL
Temperature	30 °C

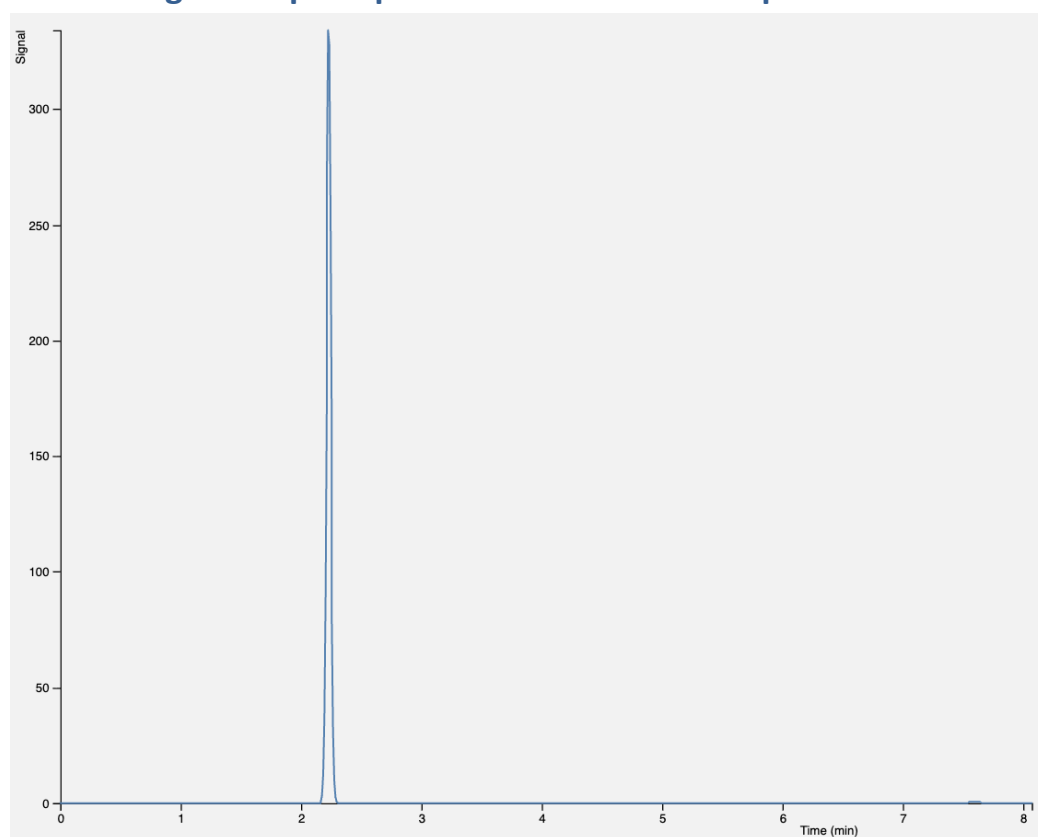
## PURITY RESULT

Purity is **99.65%**

**Product weight extrapolation: 21.9mg**

Total impurity 0.35% (trace inert solvents and minor unidentified peaks; no significant related substances or degradation products detected above 0.1%).

**Chromatogram Export: please note that x axis represents elution window.**



## CONCLUSION

This sample was analyzed on a Thermo Ultimate U3000 HPLC stack using reverse-phase high-performance liquid chromatography and determined to contain **99.65% BPC-157/TB-500 Blend**, with the remainder being impurities of minor significance.

## CERTIFICATION

**Certified by:** Jonathan Barber

**Title:** Analytical Chemist

**Date:** 10 September 2025



Trulab Peptides [www.trulabpeptides.com](http://www.trulabpeptides.com) | **Phone:** 872-239-6582

**Address:** 15017 North Dale Mabry Highway #1121 Tampa, FL 33618 United States